



ROAM MARINE

Z Marine Pty Ltd
ABN 52 144 660 702
11/20 Churchill Ave
Subiaco, WA 6008, Australia

Mb 0413 933 163
Phone 9381 9091
Email mhannaford@roam-marine.com
Web www.roam-marine.com

Project: ZJ1272, ZJ1259, ZJ 1242, ZJ 1240, ZJ 1192, ZJ 1162 & ZJ 1044
Client: FMG, FPA, Woodside, PPA, AMSA, Geraldton & Chevron
Contractor: Austral, TAMS, Tideland, Maritime
Year: 2014 - 21



Woodside nav aids



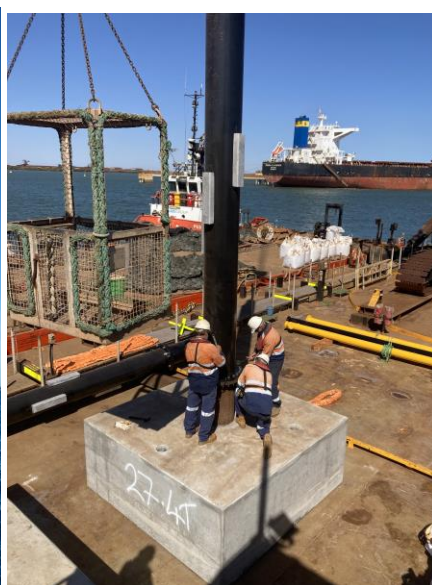
JUB driving nav aid piles at Port Hedland

Roam Marine designed nav aids including wave loads, piling, boat bumpers, FRP platforms, cathodic protection, pile clamps, fall arrest, lights, lead triangles and solar panels.

FMG nav aid was a gravity base rather than piled.



Fremantle nav aid



FMG gravity nav aid



FMG gravity nav aid

Roam Marine assisted the contractors with access platforms, lifts, transport cradles, erection engineering, demolition, barge stability and seafastenings.



Legendre FRP nav aid



Geraldton nav aid access

Legendre nav aid was only accessible by helicopter. At Geraldton some of the nav aids were done with Roam Marine access platform and crane barge, while others were done with helicopters and lightweight suspended access deck.



AMSA nav aid Port Hedland