



ROAM MARINE

Z Marine Pty Ltd
ABN 52 144 660 702
11/20 Churchill Ave
Subiaco, WA 6008, Australia

Mb 0413 933 163
Phone 9381 9091
Email mhannaford@roam-marine.com
Web www.roam-marine.com

Project: ZJ 1094 + ZJ 1036

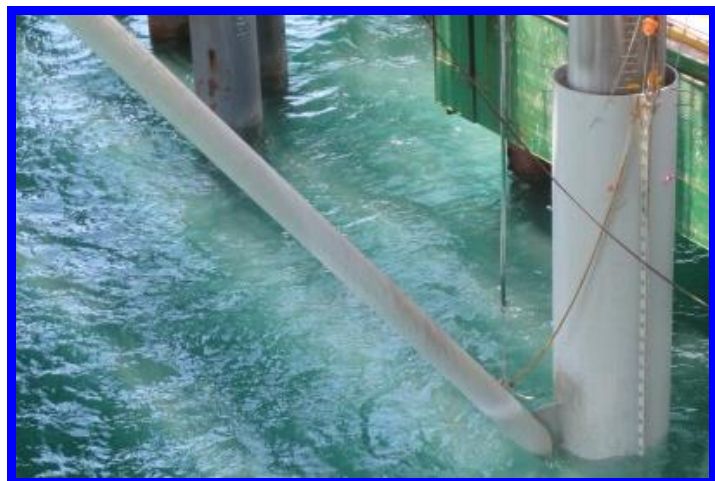
Client: Rio Tinto

Contractor: Austral & ARC

Year: 2014/2015



Roam Marine designed patches and sleeves to repair corroded piles on EII Jetty. Shown in picture is Roam Marine's "Horseshoe" 2 Level access platform used to weld on patch or sleeve and blast and paint.



Roam Marine designed a grouted sleeve and brace to repair pile that was severely damaged by a tug at Cape Lambert wharf.