



## ROAM MARINE

Z Marine Pty Ltd  
ABN 52 144 660 702  
11/20 Churchill Ave  
Subiaco, WA 6008, Australia

Mb 0413 933 163  
Phone 08 9381 9091  
Email [zmarine@roam-marine.com](mailto:zmarine@roam-marine.com)  
Web [www.roam-marine.com](http://www.roam-marine.com)

**Project:** Shute harbour Piling

**Client:** TAMS

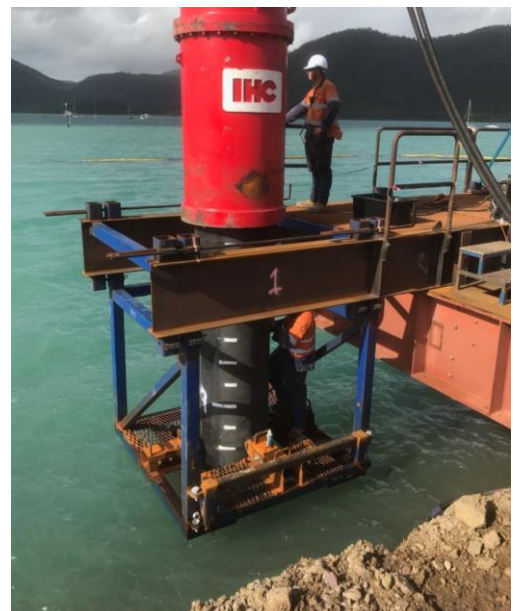
**Project scope:** TAMS were contracted to install piles and pontoons at Shute Harbour for ferry terminal that was destroyed in TC Debbie.



JUB and gates on left, new piles in centre and pontoons on beach far right to be repaired and reinstated

Roam Marine provided temporary works design including:

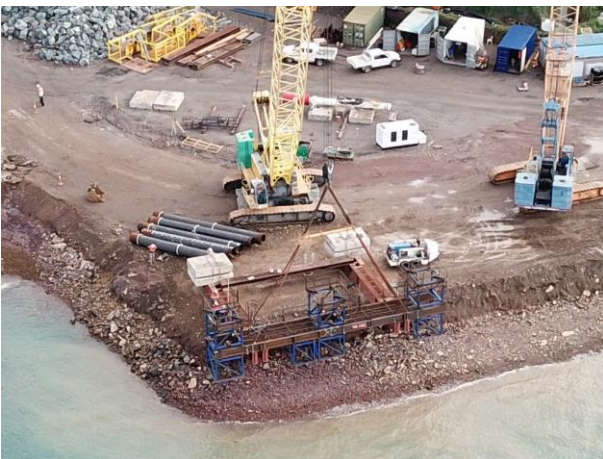
- Design of piling gate for driving up to 3\*800mm piles from a jackup barge (JUB)
- Onshore support and stability of the piling frame along the edge of the seawall
- Define the minimum pile penetration for lateral stability with and without the 27t drill, both onshore and offshore
- Temporary bracing of the pile during drilling, both onshore and offshore
- Beams to walk 150t crane onto the JUB



Promo - ZJ1230 Shute Harbour Piling



Piling gates and drill



Piling gates onshore



150t crane walking onto JUB